

DRAWING NUMBER
53/145

THE POLO CLUB OPEN SPACE PLAT TWO

SITUATE IN SECTION 35, TOWNSHIP 46 SOUTH, RANGE 42 EAST
PALM BEACH COUNTY, FLORIDA.

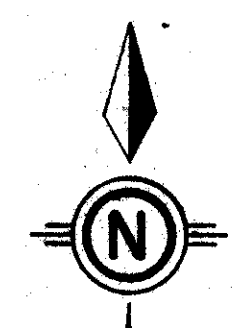
BEING A REPLAT OF A PORTION OF "THE POLO CLUB PLAT I", A P.U.D., AS RECORDED
IN PLAT BOOK 52, PAGES 35 & 36

FEBRUARY, 1986

SHEET 6 OF 8

145

STATE OF FLORIDA
COUNTY OF PALM BEACH
THIS PLAT WAS FILED FOR
RECORD AT _____ DAY OF _____
AD, 1986 AND DULY RECORDED
IN PLAT BOOK _____ ON PAGES
AND _____
BY: JOHN B. DUNKLE, CLERK
D.C.

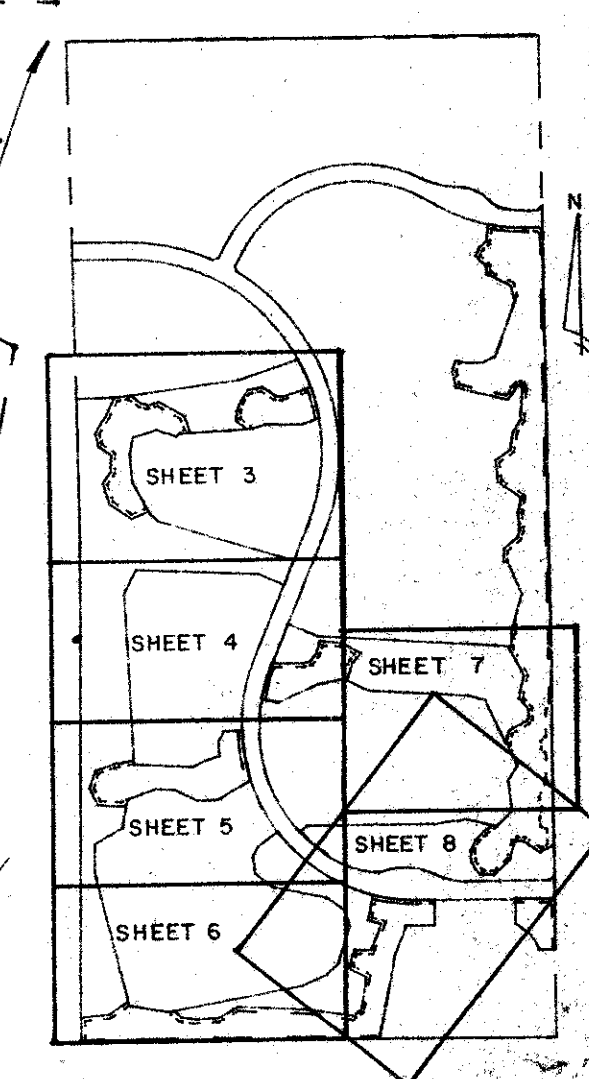
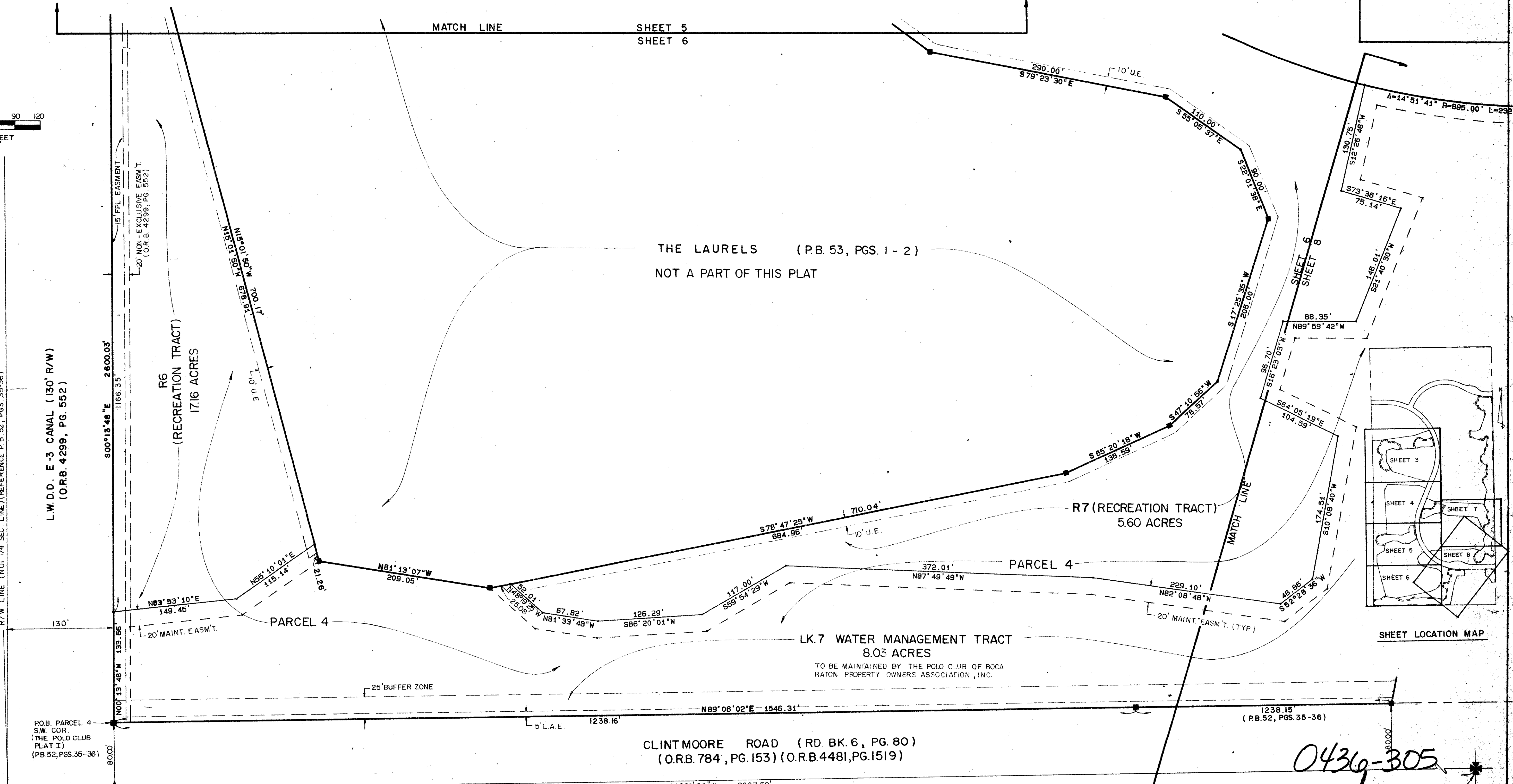


0 10 20 30 40 50 60 90 120
SCALE IN FEET
1" = 60'

DRAWING NUMBER
PLAN-HOLD CORPORATION • IRVINE, CALIFORNIA
RECORDER BY NUMBER 07548

DRAWING NUMBER
PLAN-HOLD CORPORATION • IRVINE, CALIFORNIA
RECORDER BY NUMBER 07548

DRAWING NUMBER
PLAN-HOLD CORPORATION • IRVINE, CALIFORNIA
RECORDER BY NUMBER 07548



SHEET LOCATION MAP

0436-305
53/145

Meridian Surveying and mapping inc. WEST PALM BEACH, FLORIDA

| | | | |
|------------|--------------|-----------------------------------|-----------|
| DRAWN | MAM / MEH | DATE | OCT. 1985 |
| CHECKED | MAM | SCALE | 1" = 60' |
| DRAWING NO | 85-P-058 (6) | THE POLO CLUB OPEN SPACE PLAT TWO | |

S.D. 1/4 COR.
SEC. 35-46-42
P.B. CO. DISC. IN CONC.

CLINT MOORE ROAD (RD. BK. 6, PG. 80)
(O.R.B. 784, PG. 153) (O.R.B. 4481, PG. 1519)

LK.7 WATER MANAGEMENT TRACT
8.03 ACRES
TO BE MAINTAINED BY THE POLO CLUB OF BOCA
RATON PROPERTY OWNERS ASSOCIATION, INC.

P.O.B. PARCEL 4
S.W. COR.
(THE POLO CLUB
PLAT I)
(PB 52, PGS. 35-36)